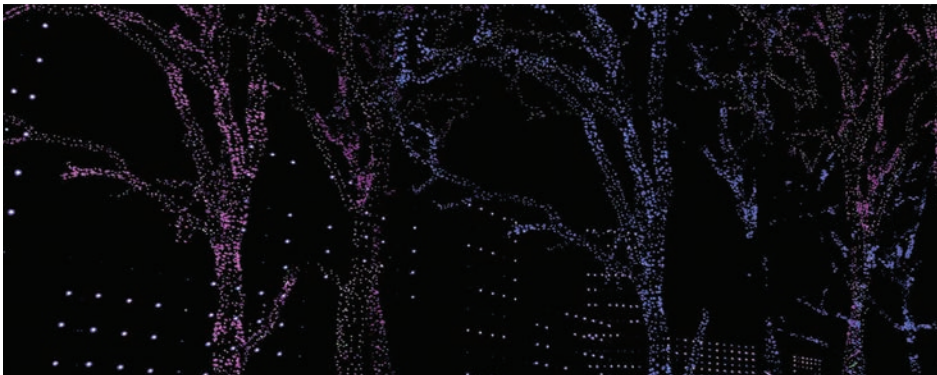
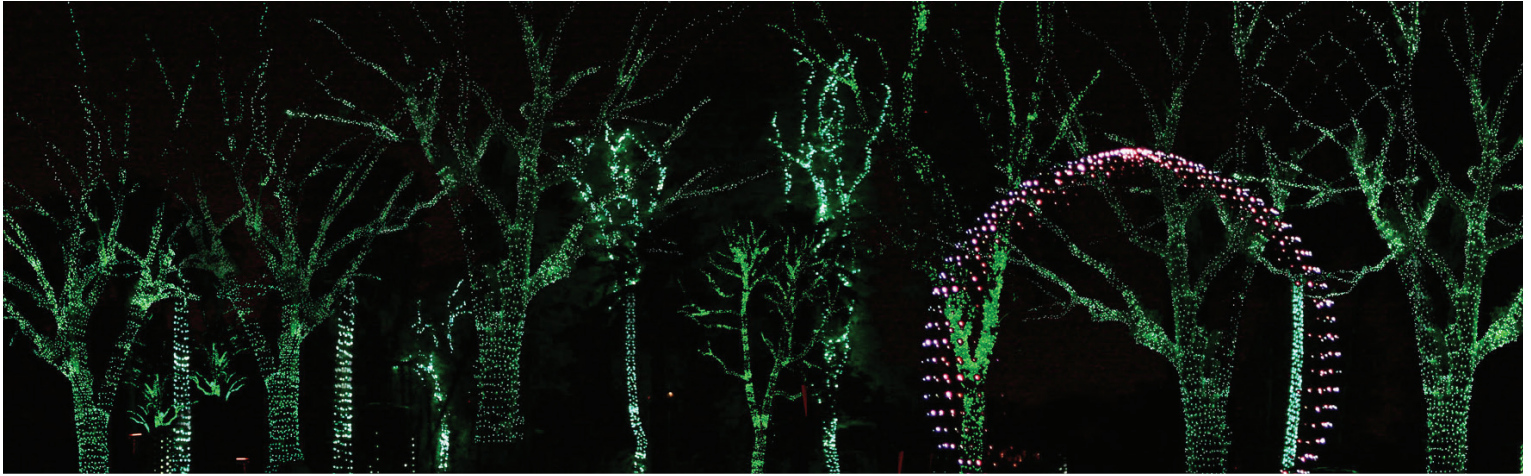


# RYAN M. MUELLER SHOW PRODUCER | CREATIVE CONSULTANT | DESIGNER

646.279.8812 • [ryan@ryanmuellercreative.com](mailto:ryan@ryanmuellercreative.com) • [ryanmuellercreative.com](http://ryanmuellercreative.com)



## *Zoolights-Music In Motion: Phoenix Zoo*

- 4 million lights and 700 glimmering light displays, all synchronized to music.
- Viewing locations were quadrupled by centering the show in the Zoo's lake vs. the previous 310' single-path show. A dozen lighted towers and a 24' diameter sphere were added on and around the Zoo's lake as well as lighting nearly 40 trees.
- More than 4,000 elements were programmed to music. Achieved the requested 90 minute throughput.



## *First Annual Tree Lighting Ceremony: Long Beach Convention Center*

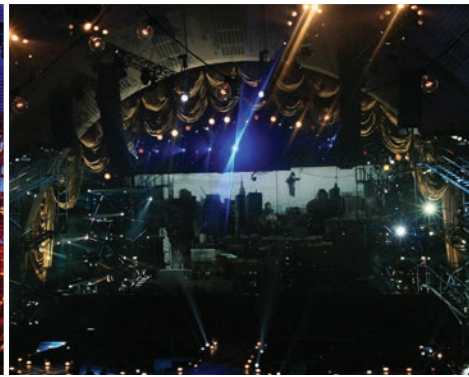
- "Lit the tallest Christmas tree in Long Beach" from start to finish in only 12 business days.
- Creating a lighting plan for the 40' tall tree, the plaza, fountains, reflecting pool, and relighting of building exterior and signage.
- Installed LED lighting package, wireless data system integration, Pharos control system and programmed shows to include day, night, and themed shows for both the plaza and fountain.





# RYAN M. MUELLER SHOW PRODUCER | CREATIVE CONSULTANT | DESIGNER

646.279.8812 • ryan@ryanmuellercreative.com • ryanmuellercreative.com



## MTV Video Music Awards

- The 2009 MTV Video Music Awards returned to Radio City Music Hall in New York City.
- The show was watched by a total of 9 million people, the biggest ratings since the 2004 award show.



## Bingo Hall: Casino Arizona

- Designed and programmed lighting looks for both daytime and nighttime attractions. The nightclub or "L8 Nite Bingo" is controlled by the DJ via a custom touch screen in real time synced with the music.
- Designed using an ETC - Mosaic Show Controller X.
- Coordinated with contractors, vendors, and trades during construction and coordinated with casino security to prevent lasers & moving lights from interfering with video surveillance.



# RYAN M. MUELLER

SHOW PRODUCER | CREATIVE CONSULTANT | DESIGNER

646.279.8812 • [ryan@ryanmuellercreative.com](mailto:ryan@ryanmuellercreative.com) • [ryanmuellercreative.com](http://ryanmuellercreative.com)



## *Godspell At The Circle In The Square Theatre: Broadway Revival*

- Designed to bring youthful energy and new investors to an old-guard industry that has always depended on the kindness of real-estate moguls and divorcees with shrewd lawyers.
- The People of Godspell contributed about 55 percent of the show's \$5 million initial Broadway capitalization.



## *Hair: Theater Mitu*

- A radical adaptation of the American Musical HAIR in collaboration with New York's Skirball Center for the Performing Arts and NYU/Tisch.
- This re-imagining manifests forty head-shaved characters with an idealistic dream of what life should be. Surrounded by an all white landscape and filled with electronica and computerized music.



# RYAN M. MUELLER

SHOW PRODUCER | CREATIVE CONSULTANT | DESIGNER

646.279.8812 • [ryan@ryanmuellercreative.com](mailto:ryan@ryanmuellercreative.com) • [ryanmuellercreative.com](http://ryanmuellercreative.com)



## *The Odyssey: Theater Mitu*

- Working in conjunction with a Pre-Hellenic archaeologist, the company studied the source materials of Homer's epic poem. The resultant adaptation stylistically manifests the style and atmosphere of a Pre-Hellenic world allowing it to transcend the bounds of Homer's vision.



## *The Ramayana - Theater Mitu*

- Using shadow puppetry, masks, ritualized music and multi-ethnic drumming, this staging of the Hindu Sacred epic transcends race and religion to delve into the core of what it means to be human.



# RYAN M. MUELLER

SHOW PRODUCER | CREATIVE CONSULTANT | DESIGNER

646.279.8812 • [ryan@ryanmuellercreative.com](mailto:ryan@ryanmuellercreative.com) • [ryanmuellercreative.com](http://ryanmuellercreative.com)



## *Barry Manilow*

- For Barry Manilow's One Last Time tour, I recreated the look of the lights from Judy Garlands 1967 concert at Madison Square Garden in a way that provided flexibility and reliability of a modern fixture, while maintaining a 1960's aesthetic.
- Oversaw Anolis system design, fixture acquisition, layout, bid submittals, CAD drawings, fabrication, and installation.



## *African Children's Choir*

- Increased the gross income of merchandise sales by 226% in four months. Defined policies and procedures resulting in increased revenues and improved touring timelines. Designed individual and corporate donor structures and wrote accompanying benefits packages.
- Approved/declined contract & rider changes from the presenters.
- Managed daily touring schedules including driving, housing, load in/outs & performances.



# RYAN M. MUELLER SHOW PRODUCER | CREATIVE CONSULTANT | DESIGNER

646.279.8812 • ryan@ryanmuellercreative.com • ryanmuellercreative.com



## *Shania Led Sign For Shania: Still The One*

- Responsible for the project management of a 14' tall by 80' wide LED sign used throughout the performance.
- Matched up the CAD drawings to the physical node layout, and ultimately the VSM Pro fixture map so that the sign would blend seamlessly with the venue's massive 34'x109' wide HD LED screen.
- Integrated hardware and software to enable video playback and visual effects output to Philips LED Color Kinetics lighting system.



## *Lollapalooza*

- Starting in 2014 3SRcreative works with C3Presents as the primary lighting coordinators for CounterPoint, LouFest, Lollapalooza, and Austin City Limits Music Festival.
- 3SRcreative Integrates the diverse history of our team that ranges from a background in touring to theater and dance to the event and installation world, we focus on combining all of our skills to find the perfect solution for any situation.